

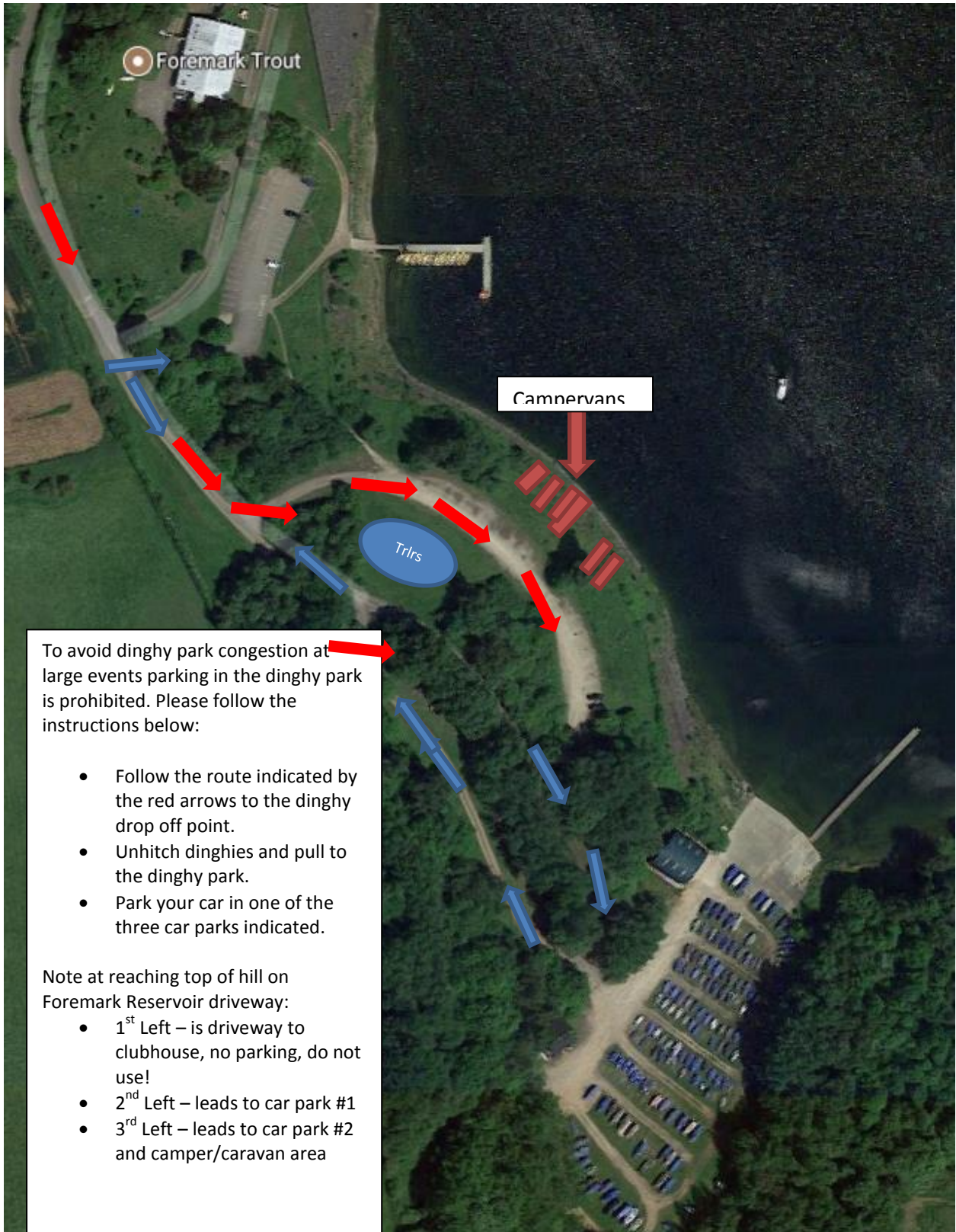
## Burton SC - Large Event Arrival

To avoid dinghy park congestion at large events parking in the dinghy park is prohibited. Please follow the instructions below:

- Follow the route indicated by the red arrows to the dinghy drop off point.
- Unhitch dinghies and pull to the dinghy park.
- Park your car in one of the three car parks indicated.

Note at reaching top of hill on Foremark Reservoir driveway:

- 1<sup>st</sup> Left – is driveway to clubhouse, no parking, do not use!
- 2<sup>nd</sup> Left – leads to car park #1
- 3<sup>rd</sup> Left – leads to car park #2 and camper/caravan area



Burton SC - Large Event Arrival